

# Test Fixture Systems

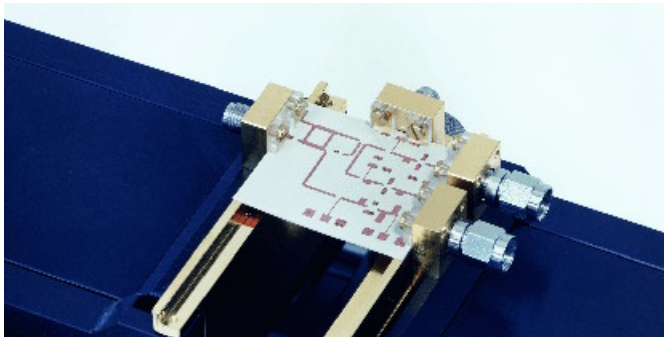
S-parameters fully describe the behavior of RF/ $\mu$ w active and passive, linear devices. The data is typically used for device characterization, circuit design verification or modeling. The Test Fixture is the interface between the coaxial measurement instrument and the terminals of your DUT. For accurate measurement results it is absolutely necessary that an in-situ S-parameter calibration at the device reference-planes is possible or that the fixture is characterized.

## Universal Test Fixture System

The HMS Universal Test Fixtures are designed for accurate S-parameter measurements of microstrip or coplanar waveguide circuits or components (SMD) in frequency ranges up to 67 GHz.

The Test Fixtures' launching connector has exceptional flexibility, repeatability and high measurement accuracy. The supporting construction is designed to provide a flexible platform for your measurement applications. The mid-section part, close to your DUT, can be customized for various package types, solder-on or push-on handlers.

A software package for calibration, de-embedding and measurements completes the spectrum.

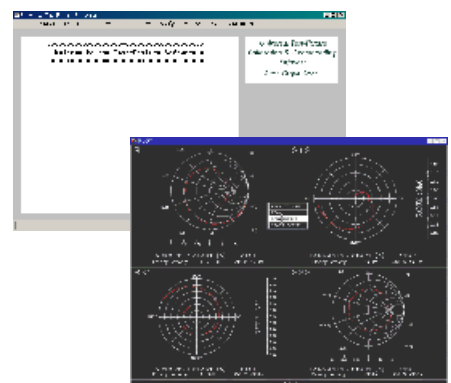


## Calibration, de-embedding & Measurement Software

Universal Test Fixture Software for scattering parameter measurement applications

### Software Highlights

- Arbitrarily modification of the reference plane positions under the consideration of the frequency dependent transmission-line parameters
- Full TRL calibration procedure for network analyzers without native support of TRL
- Time Domain, broad-band calibration with or without the Time-Domain capabilities of the NWA
- Easy design of calibration substrates, to be processed in your facility, for optimum accuracy



## Contact Information

BSW TestSystems & Consulting AG  
Oskar-Messter-Strasse 12  
85737 Ismaning  
Germany

Tel + 49 (0)89 960574-0  
Fax + 49 (0)89 960574-11  
e-mail [info@bsw-ag.com](mailto:info@bsw-ag.com)  
Internet [www.bsw-ag.com](http://www.bsw-ag.com)