

# Probe System for Life (PS4L)

- Patented Adaptive Architecture
- Systems configured to meet your application and budget
- All key components are interchangeable to adapt to application changes
- A family of Probe & Inspection Systems designed to be perpetually field upgradeable
- The most modular & flexible system on the market

## OPTICS

- StereoZoom—Low Magnification (50x–100x)
  - Large field of view (FOV)
  - Large working distance (WD)
- Compound—High Magnification (>100x- 400x)
  - Smaller field of view (FOV)
  - Smaller working distance (WD)
- Specialty—Zoom-Tube, A-Zoom

## PLATENS

- Fixed—No movement
- Linear Lift with Contact/Separation Stroke

## BASES (OPTICAL TOPS)

- Breadboards—Bench top
  - M6 Holes, 25 mm on Center
- Tables—Vibration Isolation
  - Several sizes and shapes available

## MICROSCOPE MOUNTS/MOVEMENT/LIFTS

- Mounts—Boom, Post or Bridge
- Movements—Manual, Programmable or Gantry
- Lifts—Manual, Programmable or Pneumatic

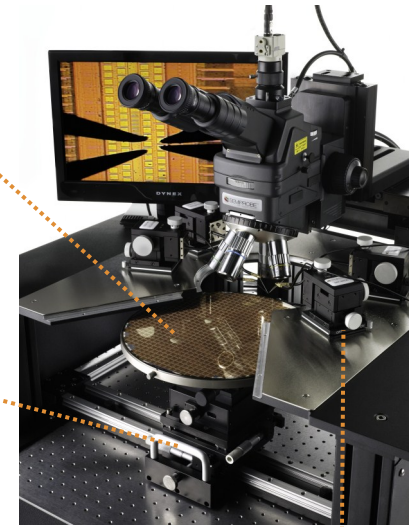


## WAFER CHUCKS

- Round, Square or Lift-Pin
- 50 mm to >450 mm
- Vacuum Rings or Vacuum Holes
- Coaxial, Triaxial, HF or Double-Sided
- Non-Thermal & Thermal

## WAFER STAGES

- Manual & Programmable
- 50 mm to >450 mm
- Upgrade Path
  - Manual to Manual—larger travel
  - Manual to Semiautomatic
  - Semiautomatic to Automatic



## ACCESSORIES

- CCTV Systems—Color Cameras & Monitors
- Manipulators—Manual & Programmable
- Probe Arms—coax, triax, HF & Kelvin
- Bases—Magnetic, Vacuum or Bolt down
- Probe Card Holders
- Probe Tips
- Localized Environmental Chamber (LEC)
- Laser Cutter
- Vacuum Pumps & Air Compressors

Copyright 2013 SemiProbe, Inc. All rights reserved. Probe System for Life and SemiProbe are registered trademarks. Lab Assistant, WIS Wafer Inspection and Pilot control software are trademarks of SemiProbe, Inc. All other trademarks are the property of their own respective owners.